

EXPLORE HOWE SOUND



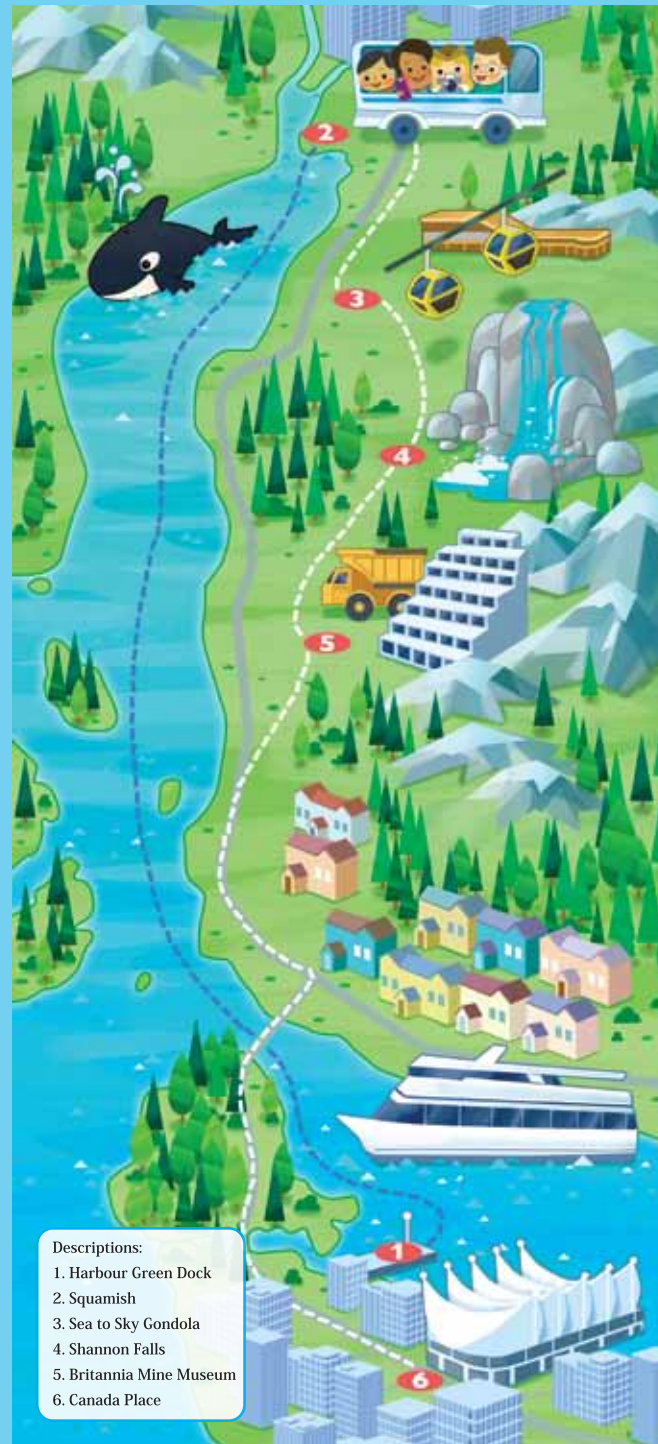
EXPERIENCE
BRITISH COLUMBIA
AT ITS FINEST



MAGIC  **YACHT**
T O U R S

  @MagicYachtTours

MAP OF ROUTE



Join us for a 4-hour cruise on a luxury yacht through Howe Sound complete with buffet breakfast. Enjoy the fresh mountain air and scenic views while travelling through the beautiful blue waters. Carry on to view it all from the mountain tops of the Sea-to-Sky Gondola. Stop for lunch at Shannon Falls, enjoy an interactive afternoon at the Britannia Mine Museum and finish off the day at one of Vancouver's most recognized landmarks, Canada Place.



For reservations please contact us:

Toll Free: 1 - 866 - 711 - 5066

or

E-mail: info@magicyachttours.com



www.magicyachttours.com

ALL DAY TOUR

8:00 AM - 6:00 PM

PRICE INCLUDES:

A 4-HOUR HOWE SOUND BOAT CRUISE,
BUFFET BREAKFAST, BOXED LUNCH,
ENTRANCE TO BOTH ATTRACTIONS,
TRANSPORTATION AND TAXES

\$290 ADULTS
\$145 CHILDREN (12 AND UNDER)



01 Board one of the signature luxury vessels in the Magic Yacht fleet and set sail on a 4-hour cruise through Howe Sound.

**DEPART HARBOUR
GREEN DOCK
AT 8:00 AM**

Enjoy picturesque scenery and photo ops, local wildlife and a buffet-style breakfast.

03 Take a 10-minute, 885-metre ascent to the top of the world. Take a walk on the Sky Pilot suspension bridge that offers a 360-degree view while suspended hundreds of feet above ground.

**2 HOURS
SEA-TO-SKY
GONDOLA**

05 This copper mine first discovered ore in 1888 and has extracted over 50 million tons of copper ore in its time. As the largest copper mine in the British Empire there's lots to explore and wander freely. Climb aboard the mine train and check out what mining was like 100 years ago!

**2 HOURS
BRITANNIA MINE
MUSEUM**



02 Disembark your vessel to board a luxury coach liner for the rest of your excursion. Squamish was established in 1910, when the Pacific Great Eastern Railway began construction. Since then, it has been known for its pulp and paper operations but most recently it's tourism and outdoor recreation.

**ARRIVE SQUAMISH
AROUND NOON**

04 Composed of a series of cliffs rising 335 metres above the Sea-to-Sky highway, Shannon Falls is the third largest falls in the province. Pick a spot on the trail to enjoy your box lunch while taking in the misty mountain air.

**45 MINS
SHANNON FALLS**

06 Time to relax and take in the sights navigating the scenic views on the Sea-to-Sky highway aboard a luxury coach returning over the Lions Gate Bridge, through Stanley Park and arriving at your final destination, Canada Place.

**RETURN TO
CANADA PLACE
AROUND 6:00 PM**